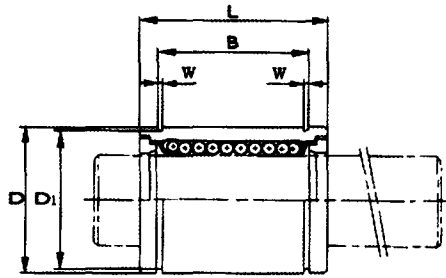


Linear Motion Bearings

LM Series Built-in Synthetic Resin Retainer

www.exvalos.cz

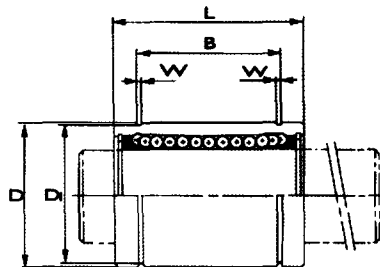


Nominal Part No.							Nominal Shaft Diameter(mm)
Standard	Type	Seal Type	Ball Circuit	Weight g	Adjustable Type	Open Type	dr
LM	5	LM 5UU	4	4	-	-	5
LM	6	LM 6UU	4	8	LM 6-AJ	-	6
LM	8S	LM 8SUU	4	11	LM 8S-AJ	-	8
LM	8	LM 8UU	4	16	LM 8-AJ	-	8
LM	10	LM 10UU	4	30	LM 10-AJ	-	10
LM	12	LM 12UU	4	31.5	LM 12-AJ	LM 12-OP	12
LM	13	LM 13UU	4	43	LM 13-AJ	LM 13-OP	13
LM	16	LM 16UU	5	69	LM 16-AJ	LM 16-OP	16
LM	20	LM 20UU	5	87	LM 20-AJ	LM 20-OP	20
LM	25	LM 25UU	6	220	LM 25-AJ	LM 25-OP	25
LM	30	LM 30UU	6	250	LM 30-AJ	LM 30-OP	30
LM	35	LM 35UU	6	390	LM 35-AJ	LM 35-OP	35
							38
LM	40	LM 40UU	6	585	LM 40-AJ	LM 40-OP	40
LM	50	LM 50UU	6	1580	LM 50-AJ	LM 50-OP	50
LM	60	LM 60UU	6	2000	LM 60-AJ	LM 60-OP	60

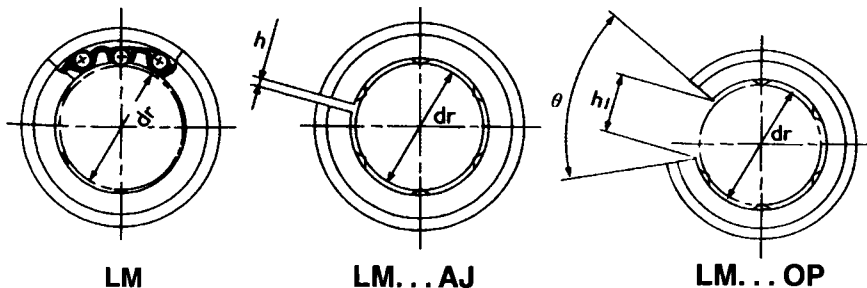
Linear Motion

Linear Motion Bearings

LME Series Built-in Synthetic Resin Retainer

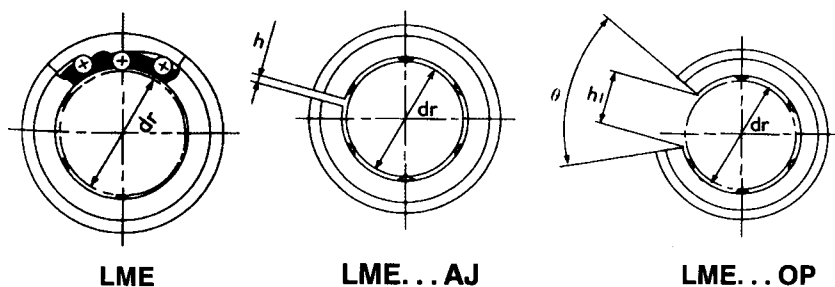


Nominal Part No.							Nominal Shaft Diameter(mm)
Standard	Type	Seal Type	Ball Circuit	Weight g	Adjustable Type	Open Type	dr
LME	5	LME 5UU	3	11	LME 5-AJ		5
LME	8	LME 8UU	4	20	LME 8-AJ		8
LME	12	LME 12UU	4	41	LME 12-AJ	LME 12-OP	12
LME	16	LME 16UU	5	65	LME 16-AJ	LME 16-OP	16
LME	20	LME 20UU	5	91	LME 20-AJ	LME 20-OP	20
LME	25	LME 25UU	6	215	LME 25-AJ	LME 25-OP	25
LME	30	LME 30UU	6	325	LME 30-AJ	LME 30-OP	30
LME	40	LME 40UU	6	705	LME 40-AJ	LME 40-OP	40
LME	50	LME 50UU	6	1130	LME 50X-AJ	LME 50-OP	50
LME	60	LME 60UU	6	2220	LME 60-AJ	LME 60-OP	60



Major Dimensions and Tolerance (mm)								Eccentricity (max)	Radial Clearance (max)	Basic Load Ratings		Nominal Part No.
D	L	B	W	D ₁	h	h ₁	Temp			C kgf	Cor kgf	
10	15	10.2	1.1	9.6	-	-	-	8	-3	17	21	LM 5
12	19	13.5	1.1	11.5	1	-	-	12	-5	21	27	LM 6
15	17	11.5	1.1	14.3	1	-	-	12	-5	18	23	LM 8S
15	24	17.5	1.1	14.3	1	-	-	12	-5	27	41	LM 8
19	29	22	1.3	18	1	-	-	12	-5	38	56	LM 10
21	30	23	1.3	20	1.5	8	80°	12	-5	42	61	LM 12
23	32	23	1.3	22	1.5	9	80°	12	-7	52	79	LM 13
28	37	26.5	1.6	27	1.5	11	60°	12	-7	79	120	LM 16
32	42	30.5	1.6	30.5	1.5	11	60°	15	-9	88	140	LM 20
40	59	41	1.85	38	2	12	50°	15	-9	100	160	LM 25
45	64	44.5	1.85	43	2.5	15	50°	15	-9	160	280	LM 30
52	70	49.5	2.1	49	2.5	17	50°	20	-13	170	320	LM 35
60	80	60.5	2.1	57	3	20	50°	20	-13	220	410	LM 40
80	100	74	2.6	76.5	3	25	50°	20	-13	390	810	LM 50
90	110	85	3.15	86.5	3	30	50°	25	-16	480		LM 60

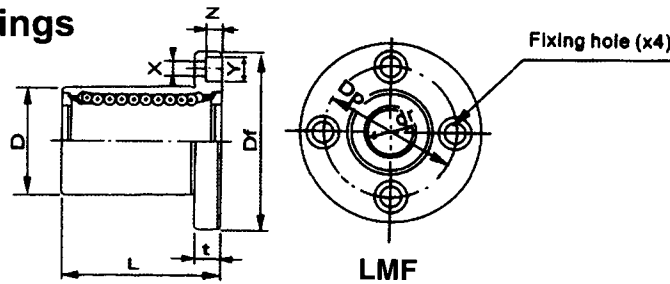
www.exvalos.cz



Major Dimensions and Tolerance (mm)								Eccentricity (max)	Radial Clearance (max)	Basic Load Ratings		Nominal Part No.
D	L	B	W	D ₁	h	h ₁	Temp			C kgf	Cor kgf	
12	22	14.5	1.1	11.5	1	-	-	12	-5	21	27	LME 5
16	25	16.5	1.1	15.2	1	-	-	12	-5	27	41	LME 8
22	32	22.9	1.3	21	1.5	7.5	78°	12	-7	52	79	LME 12
26	36	24.9	1.3	24.9	1.5	10	78°	12	-7	59	91	LME 16
32	45	31.5	1.6	30.3	2	10	60°	15	-9	88	140	LME 20
40	58	44.1	1.85	37.5	2	12.5	60°	15	-9	100	160	LME 25
47	68	52.1	1.85	44.5	2	12.5	50°	15	-9	160	280	LME 30
62	80	60.6	2.15	59	3	16.8	50°	17	-13	220	410	LME 40
75	100	77.6	2.65	72	3	21	50°	17	-13	390	810	LME 55
90	125	101.7	3.15	86.5	3	27.2	54°	20	-16	480	1020	LME 60

Linear Motion

Linear Motion Bearings



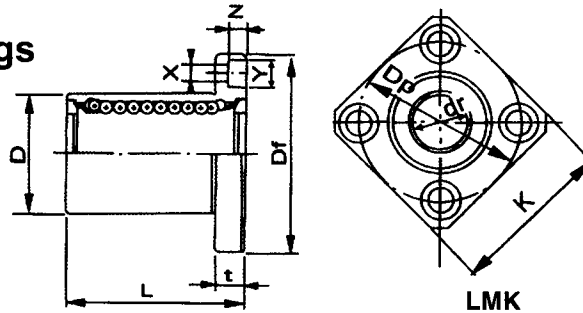
LMF Series Built-in Polyamide Retainer

Linear Motion

Nominal Part No.				Major Dimensions and Tolerance (mm)										Basic Load Ratings		Nominal Part No.		
Standard	Type	Seal Type	Ball Circuit	Weight g	dr	D	L	Flange						Eccentricity μm	Squareness μm		Dynamic CN	Static $C_0\text{N}$
								Df	t	dP	X	Y	Z					
LMF	6	LMF 6UU	4	24	6	12	19	28	5	20	3.5	6	3.1	12	12	206	265	LMF 6
LMF	8S	LMF 6UU	4	32	8	15	17	32	5	24	3.5	6	3.1	12	12	176	216	LMF 8S
LMF	8	LMF 8SUU	4	37	8	15	24	32	5	24	3.5	6	3.1	12	12	274	392	LMF 8
LMF	10	LMF 10UU	4	72	10	19	29	40	6	29	4.5	7.5	4.1	12	12	372	549	LMF 10
LMF	12	LMF 12UU	4	76	12	21	30	42	6	32	4.5	7.5	4.1	12	12	510	784	LMF 12
LMF	13	LMF 13UU	4	88	13	23	32	43	6	33	4.5	7.5	4.1	12	12	510	784	LMF 13
LMF	16	LMF 16UU	4	120	16	28	37	48	6	38	4.5	7.5	4.1	12	12	774	1,180	LMF 16
LMF	20	LMF 20UU	5	180	20	32	42	54	8	43	5.5	9	5.1	15	15	882	1,370	LMF 20
LMF	25	LMF 25UU	5	340	25	40	59	62	8	51	5.5	9	5.1	15	15	980	1,570	LMF 25
LMF	30	LMF 30UU	6	470	30	45	64	74	10	60	6.6	11	6.1	15	15	1,570	2,740	LMF 30
LMF	35	LMF 35UU	6	650	35	52	70	82	10	67	6.6	11	6.1	20	20	1,670	3,140	LMF 35
LMF	40	LMF 40UU	6	1,060	40	60	80	96	13	78	9	14	8.1	20	20	2,160	4,020	LMF 40
LMF	50	LMF 50UU	6	2,200	50	80	100	116	13	98	9	14	8.1	20	20	3,820	7,900	LMF 50
LMF	60	LMF 60UU	6	3,000	60	90	110	134	18	112	11	17	11.1	25	25	4,700	10,000	LMF 60

SI Unit 1N=0.102kgf

Linear Motion Bearings



LMK Series Built-in Polyamide Retainer

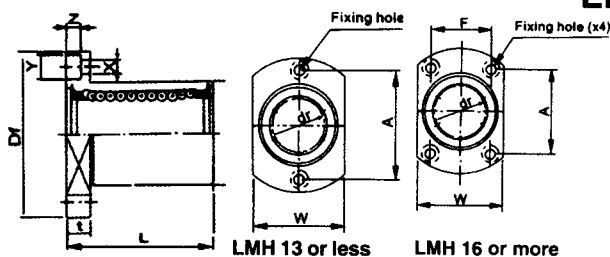
www.exvalos.cz

Nominal Part No.				Major Dimensions and Tolerance										Basic Load Ratings		Nominal Part No.			
Standard	Type	Seal Type	Ball Circuit	Weight g	dr	D	L	Flange						Eccentricity μm	Squareness μm		Dynamic CN	Static $C_0\text{N}$	
								Df	K	t	DP	X	Y			Z			
LMK	6	LMK 6UU	4	24	6	12	19	28	22	5	20	3.5	6	3.1	12	12	206	265	LMK 6
LMK	8S	LMK 6UU	4	32	8	15	17	32	25	5	24	3.5	6	3.1	12	12	176	216	LMK 8S
LMK	8	LMK 8SUU	4	37	8	15	24	32	25	5	24	3.5	6	3.1	12	12	274	392	LMK 8
LMK	10	LMK 10UU	4	72	10	19	29	40	30	6	29	4.5	7.5	4.1	12	12	372	549	LMK 10
LMK	12	LMK 12UU	4	76	12	21	30	42	32	6	32	4.5	7.5	4.1	12	12	510	784	LMK 12
LMK	13	LMK 13UU	4	88	13	23	32	43	34	6	33	4.5	7.5	4.1	12	12	510	784	LMK 13
LMK	16	LMK 16UU	5	120	16	28	37	48	37	6	38	4.5	7.5	4.1	12	12	774	1,180	LMK 16
LMK	20	LMK 20UU	5	180	20	32	42	54	42	8	43	5.5	9	5.1	15	15	882	1,370	LMK 20
LMK	25	LMK 25UU	5	340	25	40	59	62	50	8	51	5.5	9	5.1	15	15	980	1,570	LMK 25
LMK	30	LMK 30UU	6	470	30	45	64	74	58	10	60	6.6	11	6.1	15	15	1,570	2,740	LMK 30
LMK	35	LMK 35UU	6	650	35	52	70	82	64	10	67	6.6	11	6.1	20	20	1,670	3,140	LMK 35
LMK	40	LMK 40UU	6	1,060	40	60	80	96	75	13	78	9	14	8.1	20	20	2,160	4,020	LMK 40
LMK	50	LMK 50UU	6	2,200	50	80	100	116	92	13	98	9	14	8.1	20	20	3,820	7,900	LMK 50
LMK	60	LMK 60UU	6	3,000	60	90	110	134	106	112	11	17	11.1	25	25	4,700	10,000	LMK 60	

SI Unit 1N=0.102kgf

LMH Series Built-in Polyamide Retainer

Linear Motion Bearings



LMH 13 or less LMH 16 or more

Nominal Part No.				Major Dimensions and Tolerance											Eccentricity Squareness		Basic Load Ratings		Nominal Part No.
Standard	Type	Seal Type	Ball Circuit	Weight g	dr	D	L	Flange							μm	μm	Dynamic CN	Static C ₀ N	
								D _f	W	t	A	F	X	Y					Z
LMH	6	LMH 6UU	4	21	6	12	19	28	18	5	20	3.5	6	3.1	12	12	206	265	LMH 6
LMH	8	LMH 8UU	4	33	8	15	24	32	21	5	24	3.5	6	3.1	12	12	274	392	LMH 8
LMH	10	LMH 10UU	4	64	10	19	29	40	25	6	29	4.5	7.5	4.1	12	12	372	549	LMH 10
LMH	12	LMH 12UU	4	68	12	21	30	42	27	6	32	4.5	7.5	4.1	12	12	510	784	LMH 12
LMH	13	LMH 13UU	4	88	13	23	32	43	29	6	33	4.5	7.5	4.1	12	12	510	784	LMH 13
LMH	16	LMH 16UU	5	112	16	28	37	48	34	6	31	4.5	7.5	4.1	12	12	774	1,180	LMH 16
LMH	20	LMH 20UU	5	167	20	32	42	54	38	8	36	5.5	9	5.1	15	15	882	1,370	LMH 20
LMH	25	LMH 25UU	6	325	25	40	59	62	46	8	40	5.5	9	5.1	15	15	980	1,570	LMH 25
LMH	30	LMH 30UU	6	388	30	45	64	74	51	10	49	6.6	11	6.1	15	15	1,570	2,740	LMH 30

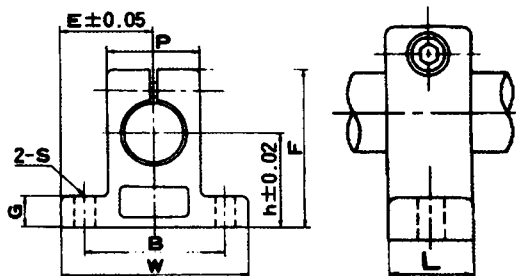
SI Unit 1N=0.102kgf

Shaft Holder SK Series

Linear Motion Bearings

Linear Motion

www.exvalos.cz



Unit : mm

Nominal Shaft Diameter	Part No.	Major Dimensions									Clamping bolt designation	Mounting bolt designation	Weight g
		h	E	W	L	F	G	P	B	S			
8	SK 8A	20	21	42	14	32.8	6	18	32	5.5	M4	M5	24
10	SK 10A	20	21	42	14	32.8	6	18	32	5.5	M4	M5	24
12	SK 12A	23	21	42	14	37.5	6	20	32	5.5	M4	M5	30
13	SK 13A	23	21	42	14	37.5	6	20	32	5.5	M4	M5	30
16	SK 16A	27	24	48	16	44	8	25	38	5.5	M4	M5	40
20	SK 20A	31	30	60	20	51	10	30	45	6.6	M5	M6	70
25	SK 25A	35	35	70	24	60	12	38	56	6.6	M6	M6	130
30	SK 30A	42	42	84	28	70	12	44	64	9	M6	M8	180
35	SK 35A	50	49	98	32	82	15	50	74	11	M8	M10	270
40	SK 40A	60	57	114	36	96	15	60	90	11	M8	M10	420
50	SK 50A	70	63	126	40	120	18	74	100	14	M12	M12	750
60	SK 60A	80	74	148	45	136	18	90	120	14	M12	M12	1,100